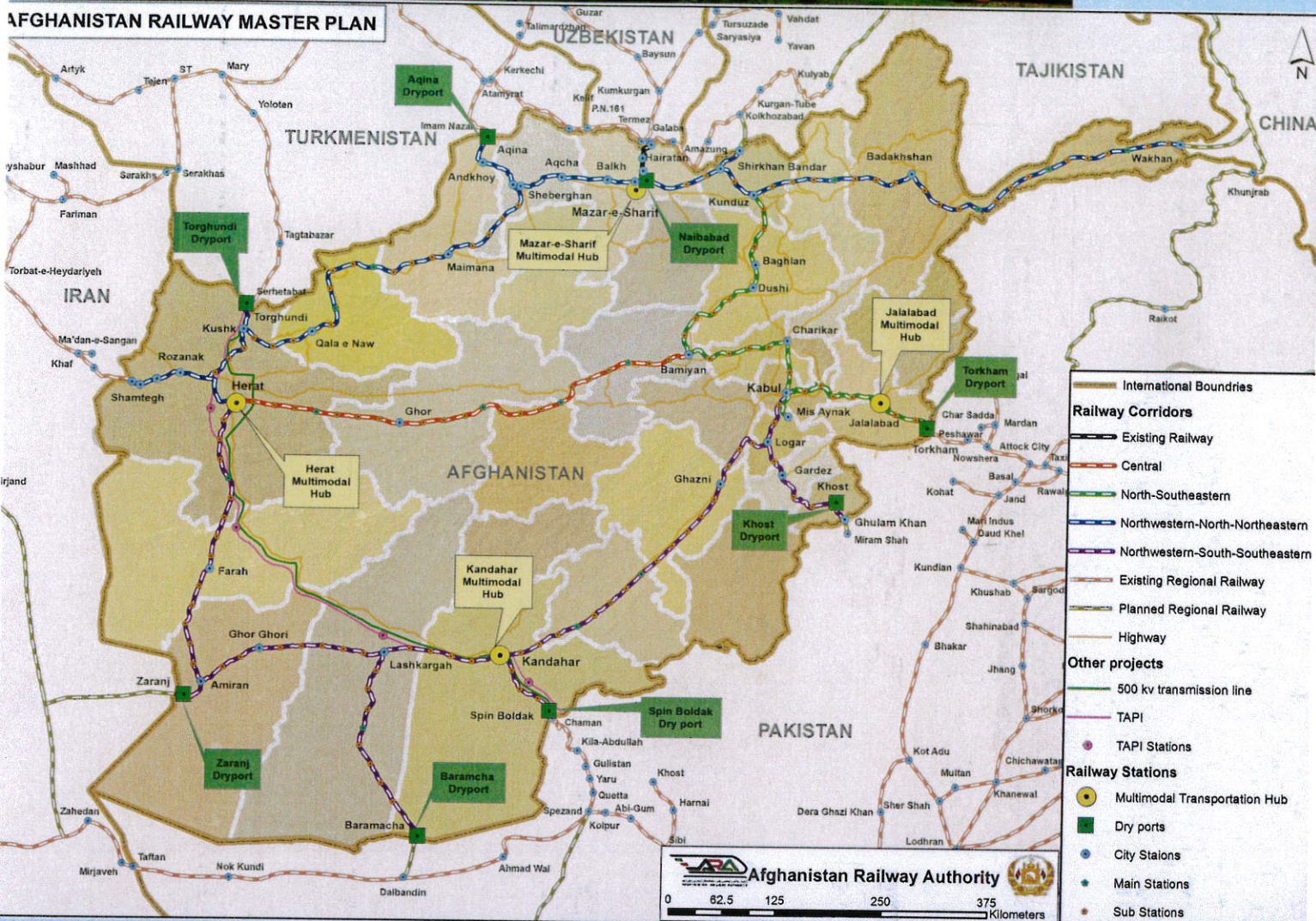




د افغانستان ريلو اتودوريه
AFGHANISTAN RAILWAY AUTHORITY



AFGHANISTAN RAILWAY MASTER PLAN



A. The Afghanistan railway plan is comprised of four corridors

No	Corridor	Main Line (km)	Regional (km)	Total (km)
1	West-North-North East	1132 km	838 km	1970 km
2	West-South-South-East	1260 km	571 km	1831 km
3	North-Souh	590 km	75 km	665 km
4	Central	574 km		574 km

B. Transportation center (Multimodal Hub)

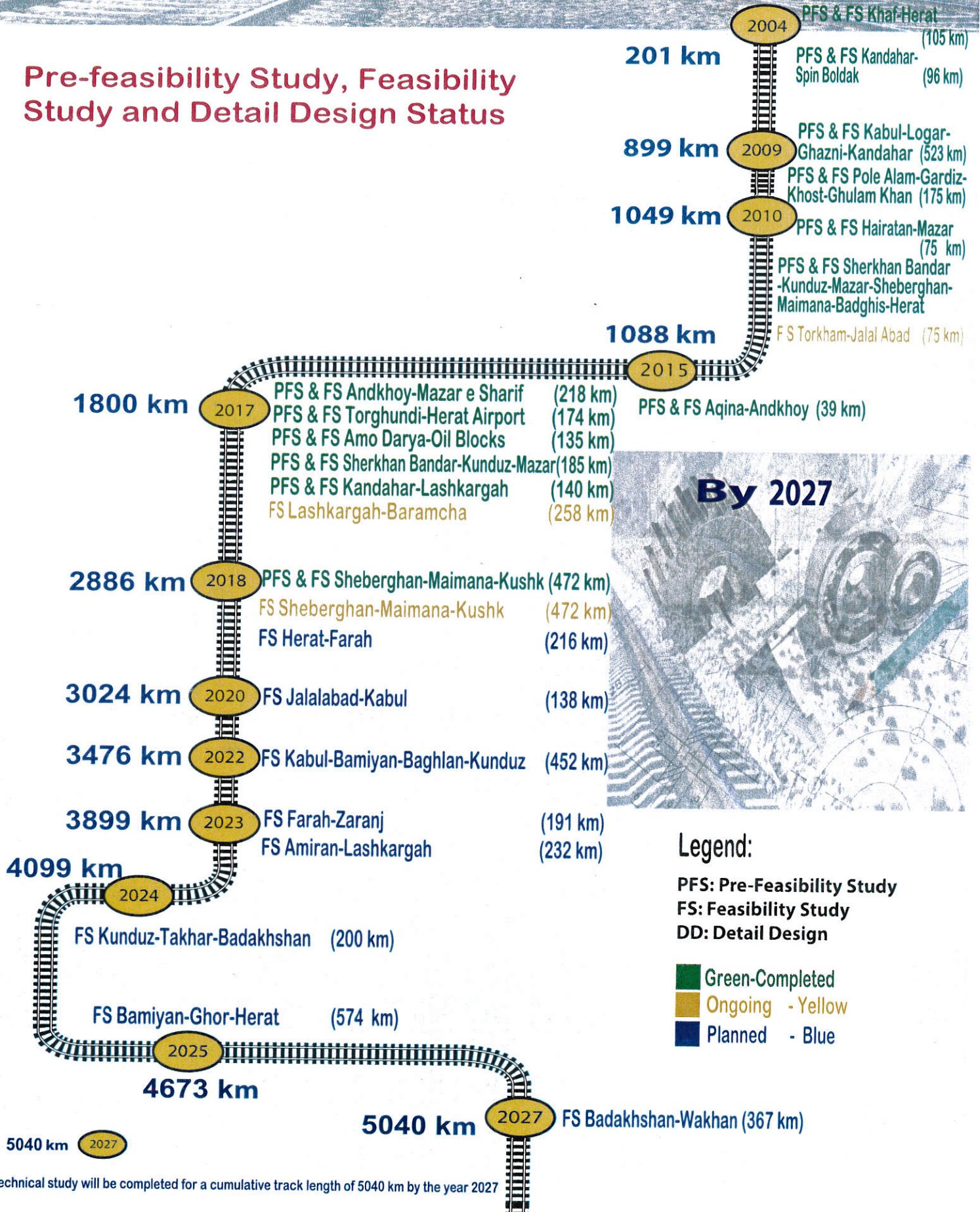
C. Dry Ports included in Afghanistan Railway Plan

No	Multimodal Hub	
	City	Province
1	Jalalabad	Nangarhar
2	Mazar e Sharif	Balkh
3	Herat	Herat
4	Kandahar	Kandahar

No	Dry Prots		
	City	No	City
1	Torghundi	5	Torkham
2	Aqina	6	Khost
3	Spin Boldak	7	Baramcha
4	Naibabad	8	Zaranj

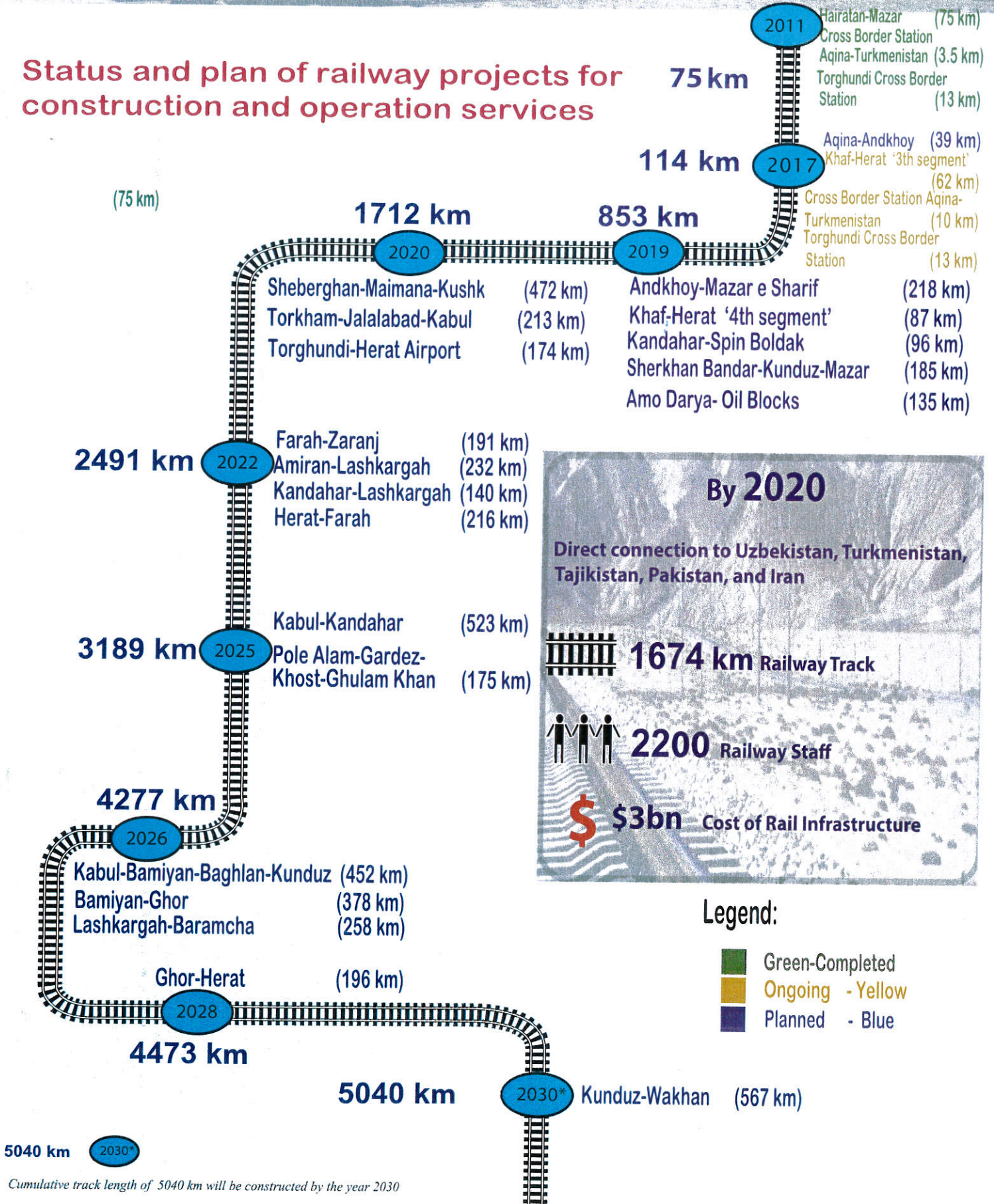
The Journey of Railway Directorate in Afghanistan

Pre-feasibility Study, Feasibility Study and Detail Design Status



The Journey of Railway Directorate in Afghanistan

Status and plan of railway projects for construction and operation services



ON THE FAST TRACK

North Zone (1257 km)

In Operation by 2020

Sherkhan Bandar-Kunduz-Hairatan-Mazar-Aqina-Sheberghan-Maimana-Torghundi-Herat-Khaf

North-East Zone

(566 km)

In Operation by 2030
Kunduz-Wakhan

UZBEKISTAN

TAJIKISTAN

CHINA

TURKMENISTAN

AQINA

SHERKHAN BANDAR

MAZAR

KUNDUZ

QALA-E-MAFUSHAD

TORGHUNDI

KHAF

IRAN

INDIA

PAKISTAN

South Zone

(107 km)

In Operation by 2020
Kandahar-Spin Boldak-Chaman

West Zone

(1100 km)

In Operation by 2020

Herat-Amiran-Zaranj-Ghorghori-Lashkargah-Kandahar-Spin Boldak

East Zone

(1325 km)

In Operation by 2025
Kandahar-Ghazni-Logar-Kabul-Kunduz

Central Zone

(574 km)

In Operation by 2030
Bamiyan-Ghor-Herat

2020 Plan

2025 Plan

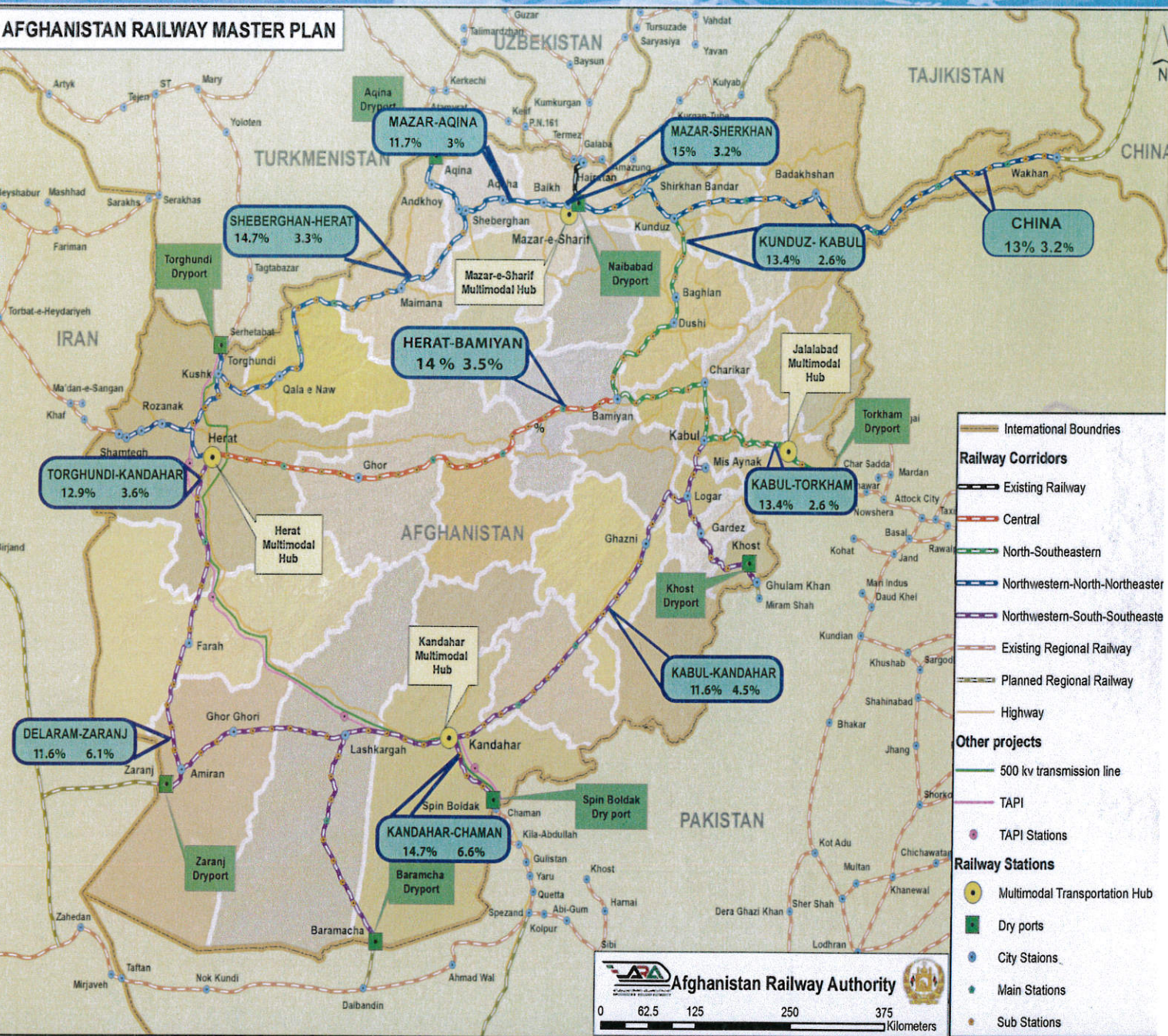
2030 Plan

COST TO CONNECT



FINANCIAL AND ECONOMIC RETURN

AFGHANISTAN RAILWAY MASTER PLAN



A 12 % EIRR has been used as the minimum required to accept the economic viability of the project (although if other non-quantified/non-quantifiable benefits are not quantified the acceptable rate could be 10 % according to ADB standard)

The weighted average cost of capital (WACC) rate of return over which the project would be acceptable on financial grounds is estimated at 2.75 % This rate assumes the major part of the project financed by ADB, or other funding organization and a slight share by the Afghan government.

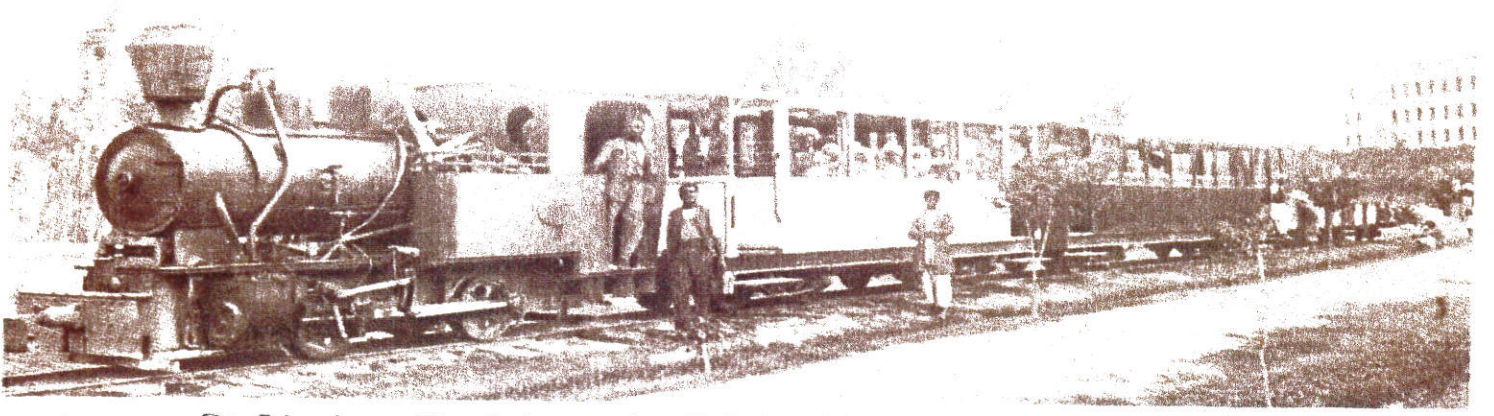


Regional Railway Network



AFGHANISTAN RAILWAY INTERNATIONAL CONNECTIVITY MAP





Die 7 km lange Eisenbahn zwischen Kabul und Darul-Aman war stark überfüllt.

Afghanistan Railway Authority is committed for the development and operation of more than 5000 km of railway in Afghanistan as bridging network in the region for trade and transit of passenger and goods transportation economic services.



Contact us to be a partner in the development of railway in Afghanistan

Mohammad Yamma Shams

Director General & Chief Executive Officer

Afghanistan Railway Authority

Government of Islamic Republic of Afghanistan

Email: myamma.shams@ara.gov.af

www.ara.gov.af

Tel: +93 74 425 2820 +93 78 750 1000